

# Oxford City Planning Committee Presentation

[www.oxford.gov.uk](http://www.oxford.gov.uk)



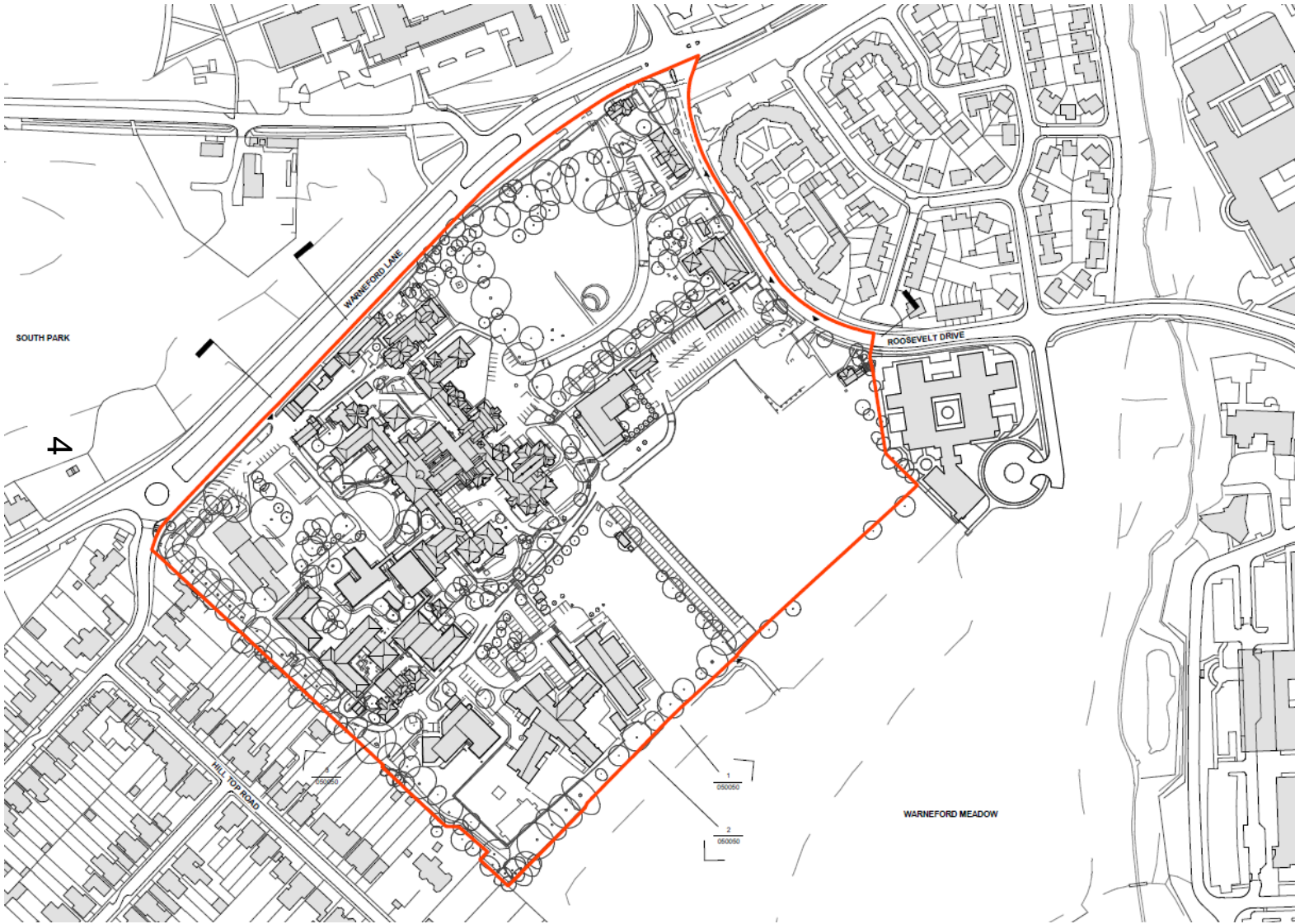
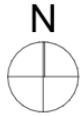
3

**Reference Number: 25/01859/OUTFUL**

**Site Address: Warneford Hospital, Oxford**



# Site Location



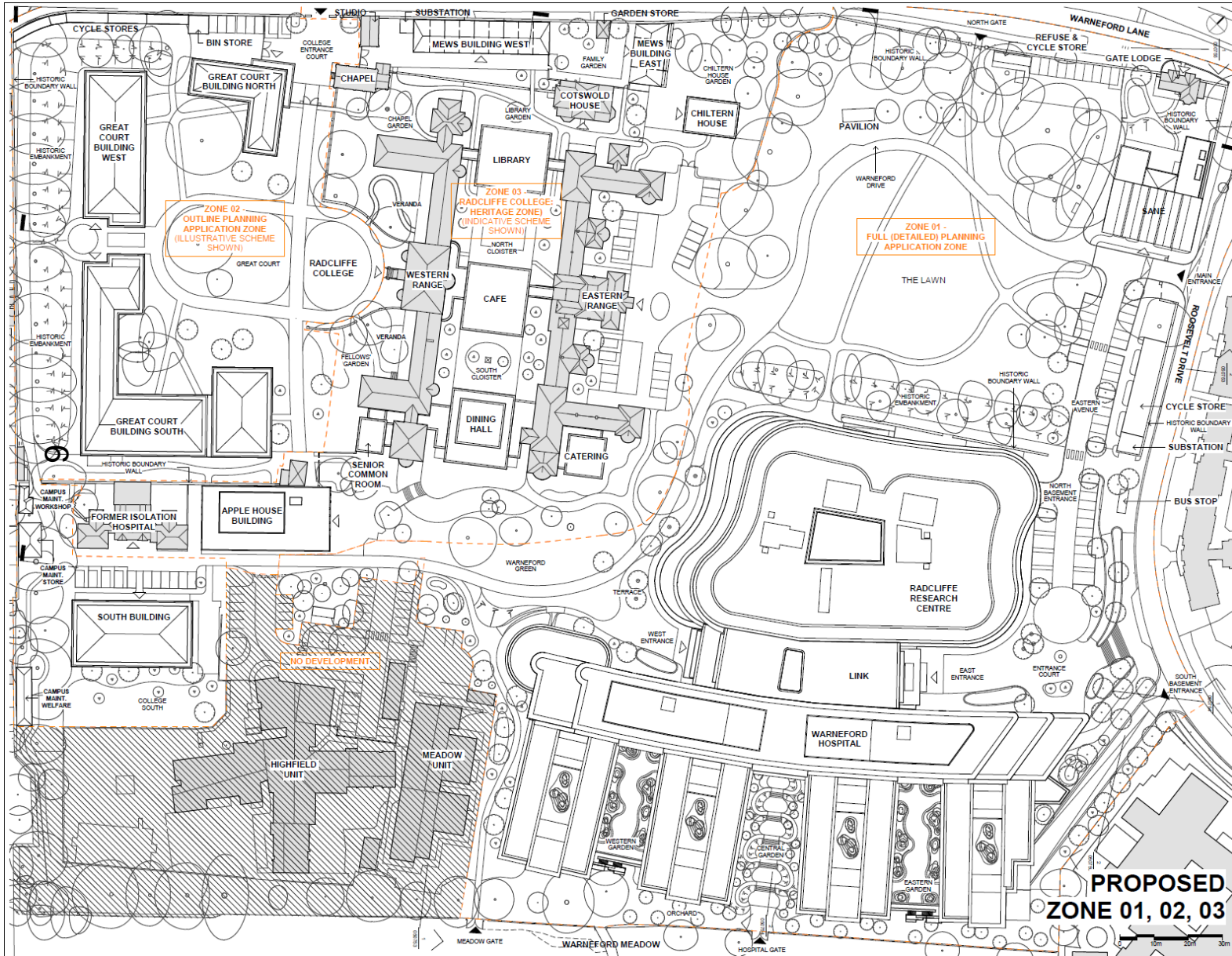
# Existing Site



# Proposed Masterplan



**OXFORD  
CITY  
COUNCIL**



# Proposed Changes

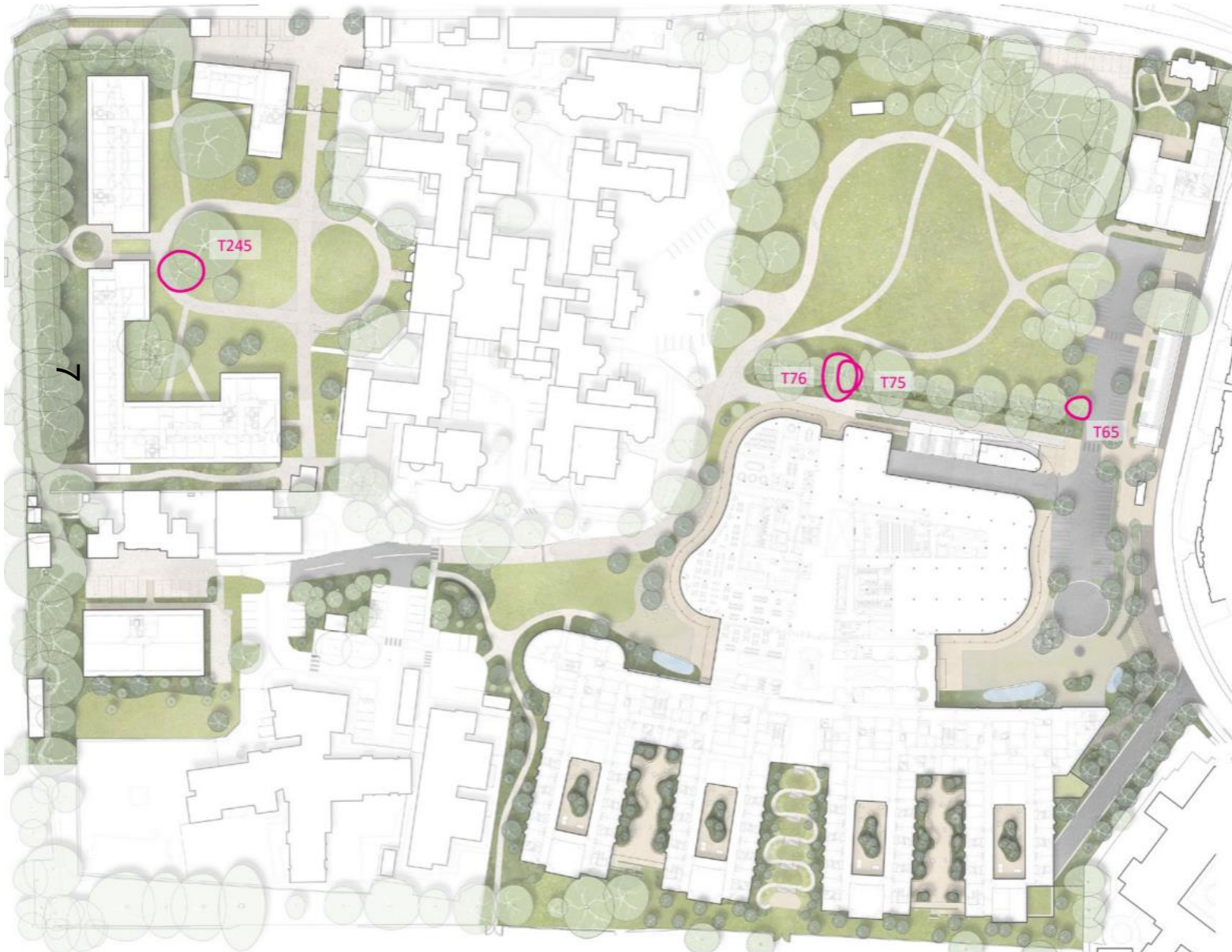


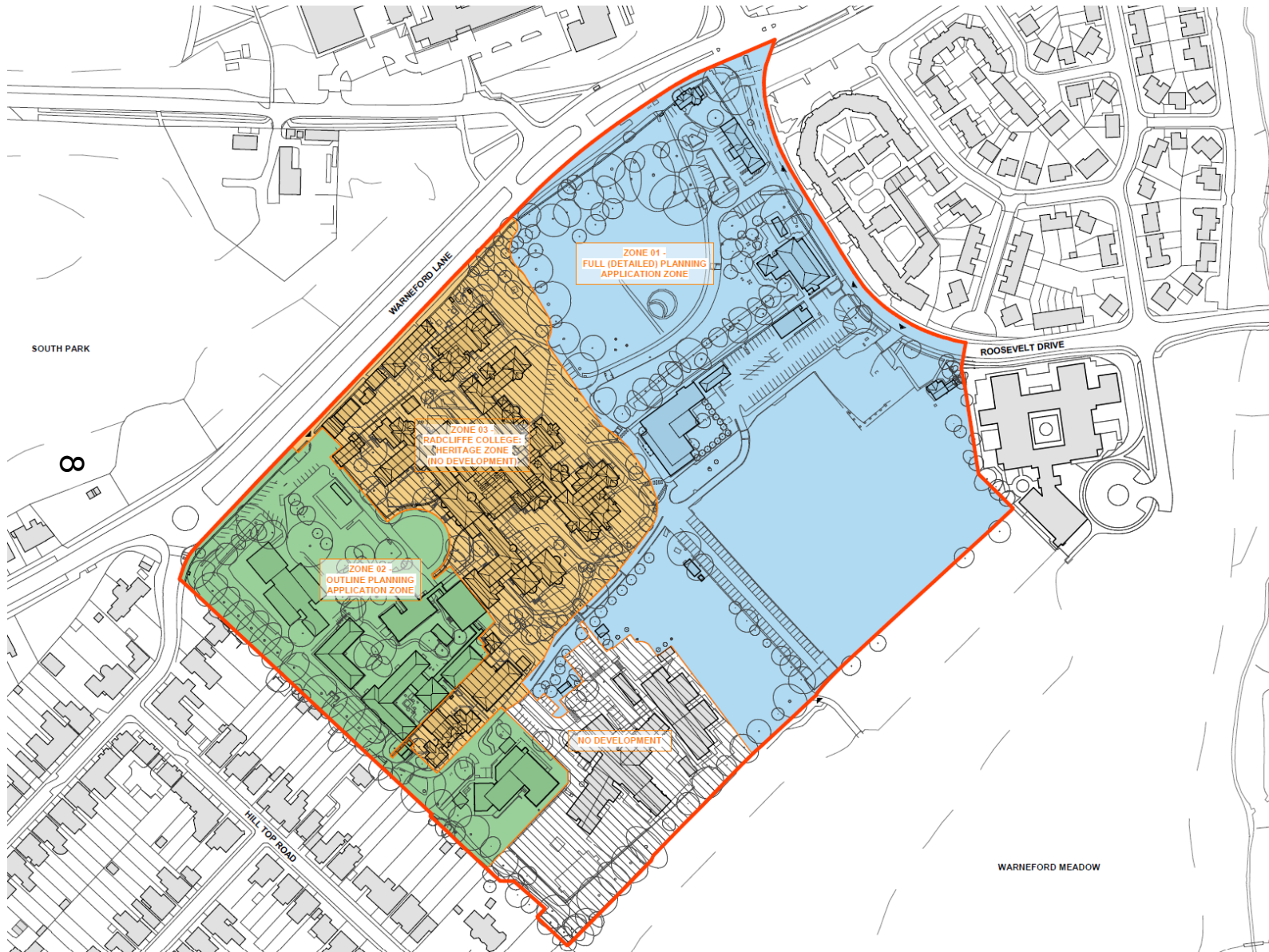
Diagram highlighting retained trees



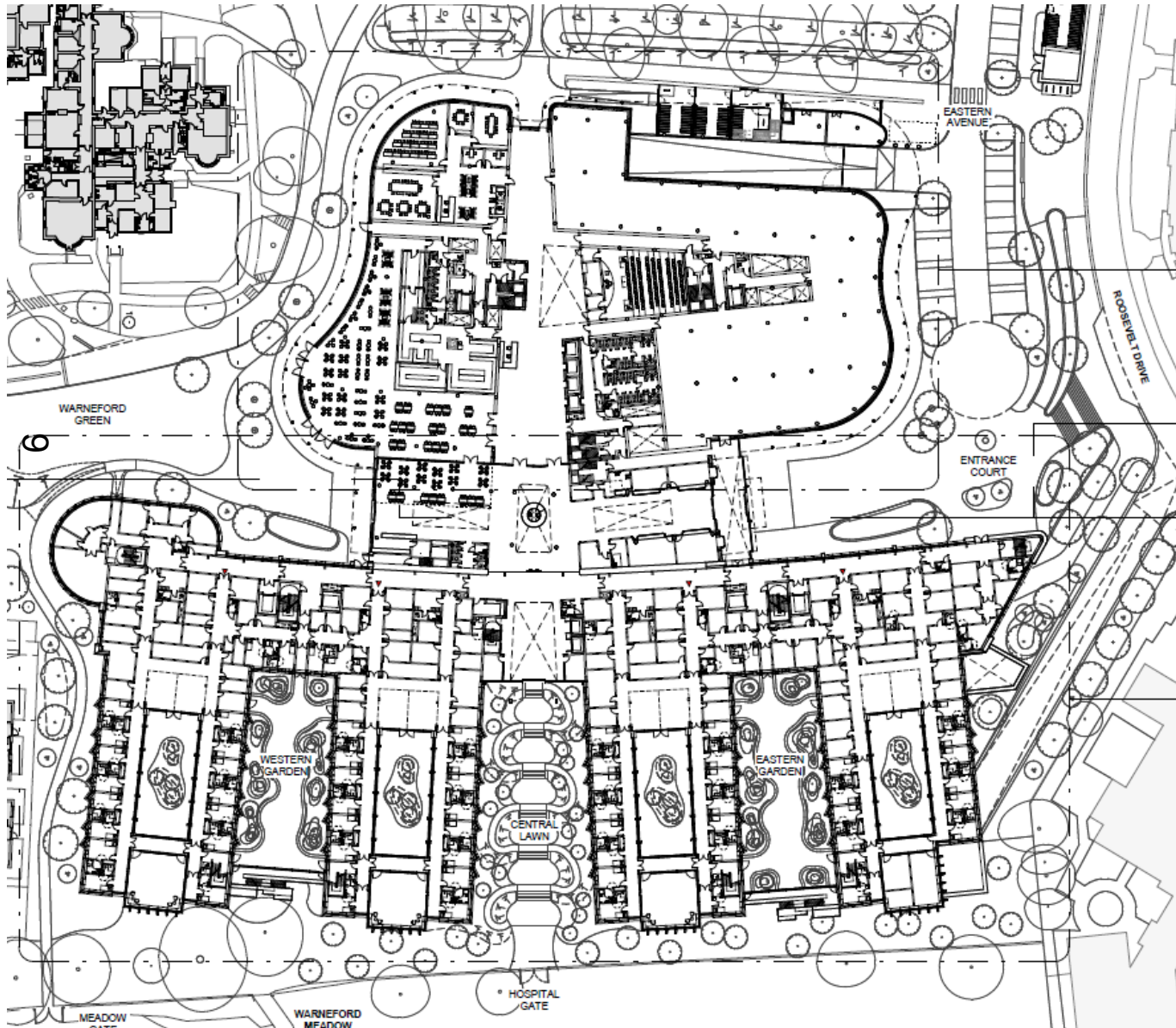
**OXFORD  
CITY  
COUNCIL**



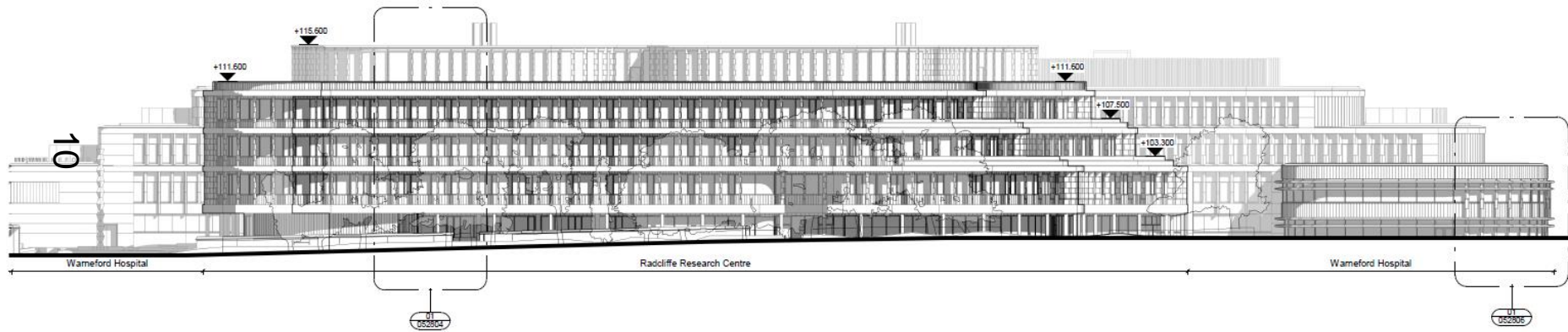
# Proposed Phasing/Zones



# Proposed Hospital, Link and Research Centre



# Proposed Research Centre



North Elevation

# Proposed Research Centre



North Elevation

# Proposed Research Centre



12

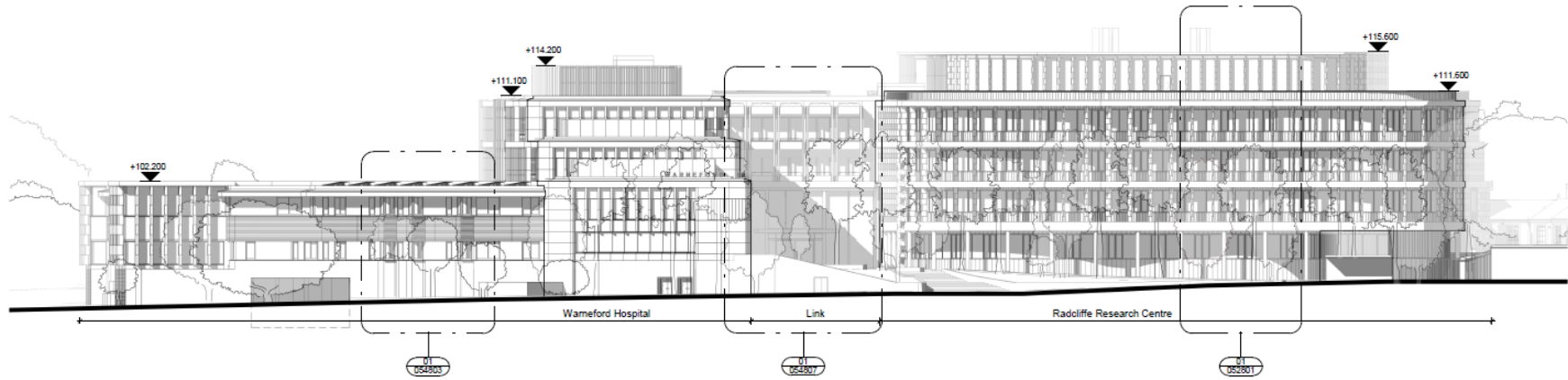
**North Elevation**

# Proposed Arrival

13

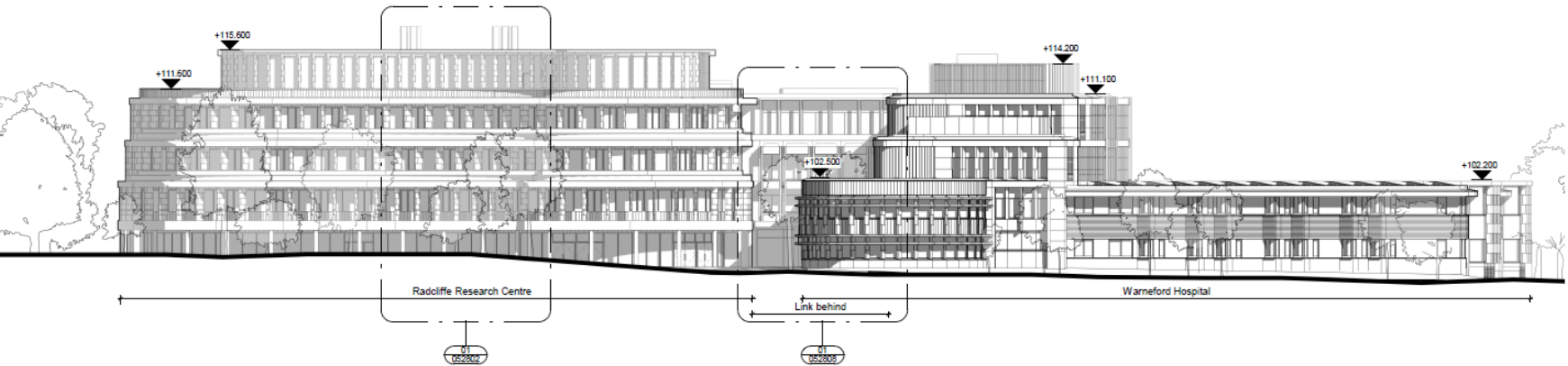


# Proposed Hospital, Link and Research Centre



1 East Elevation  
General Arrangement - Hospital, Link & Research 1 : 250

14



2 West Elevation  
General Arrangement - Hospital, Link & Research 1 : 250

# Proposed Hospital, Link and Research Centre



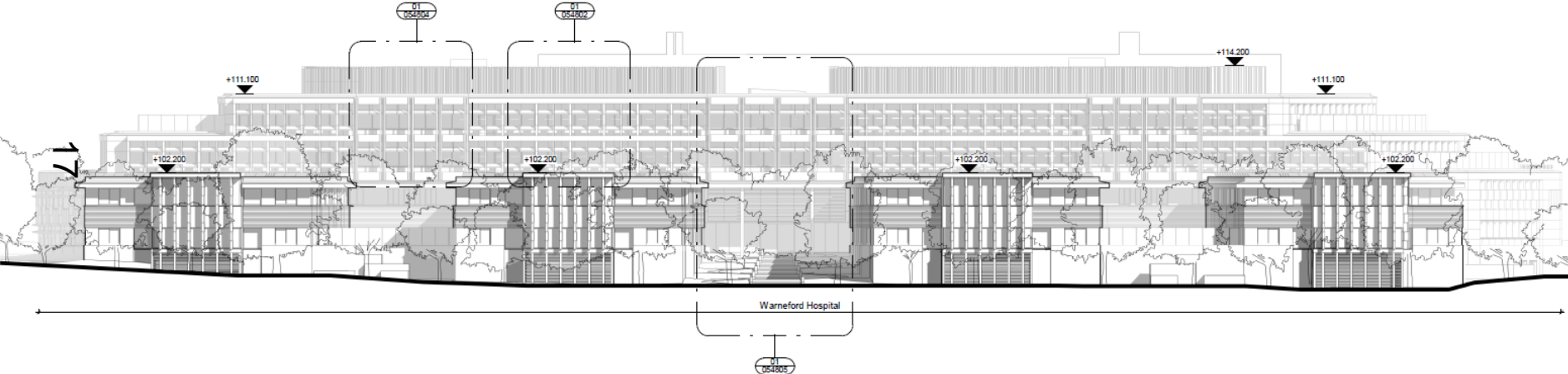
East Elevation

# Proposed Hospital, Link and Research Centre



**West Elevation**

# Proposed Hospital



2 South Elevation  
General Arrangement - Hospital, Link & Research 1 : 250

South Elevation

# Proposed Hospital



18

South Elevation

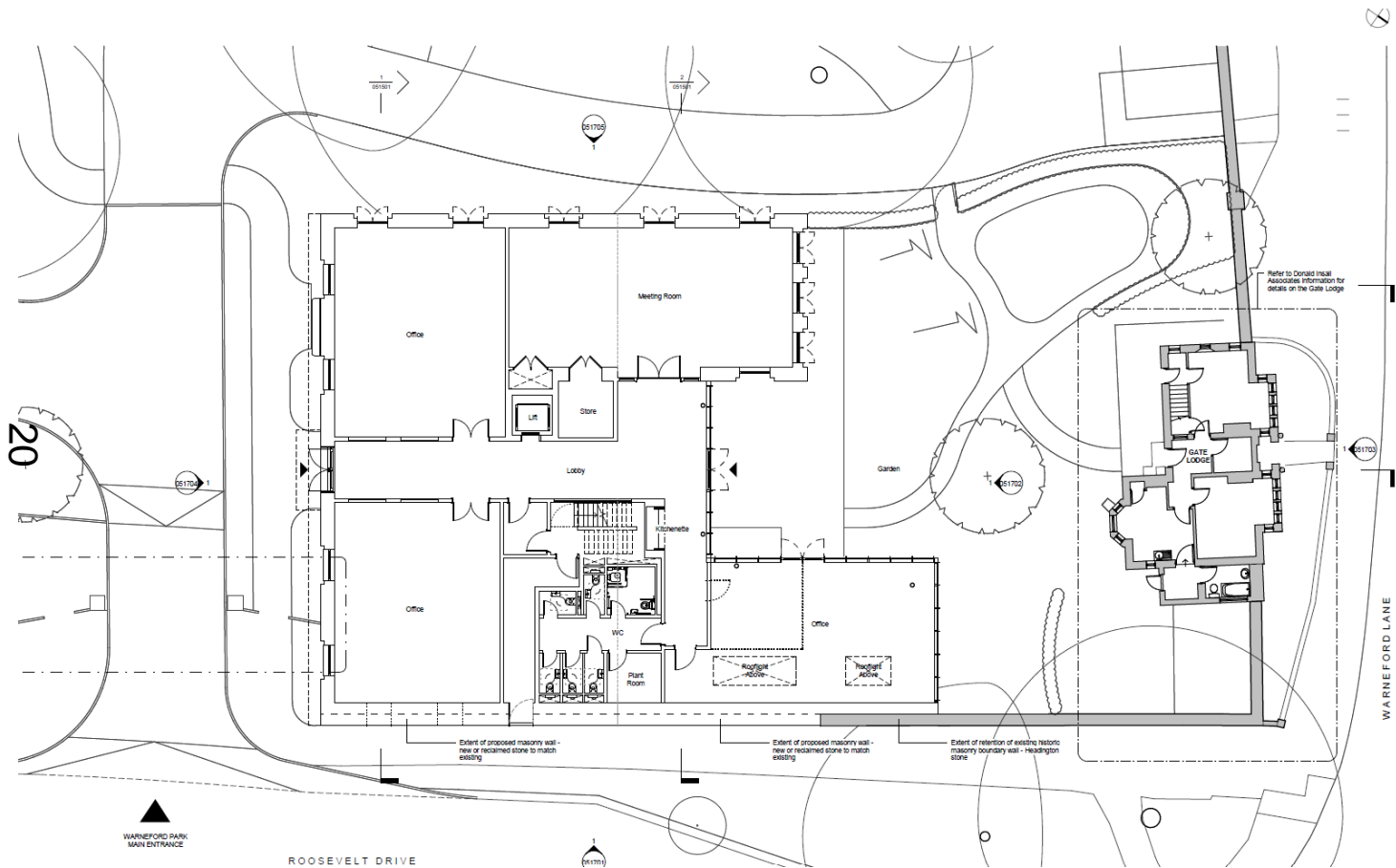
# Proposed Hospital



19

South Elevation

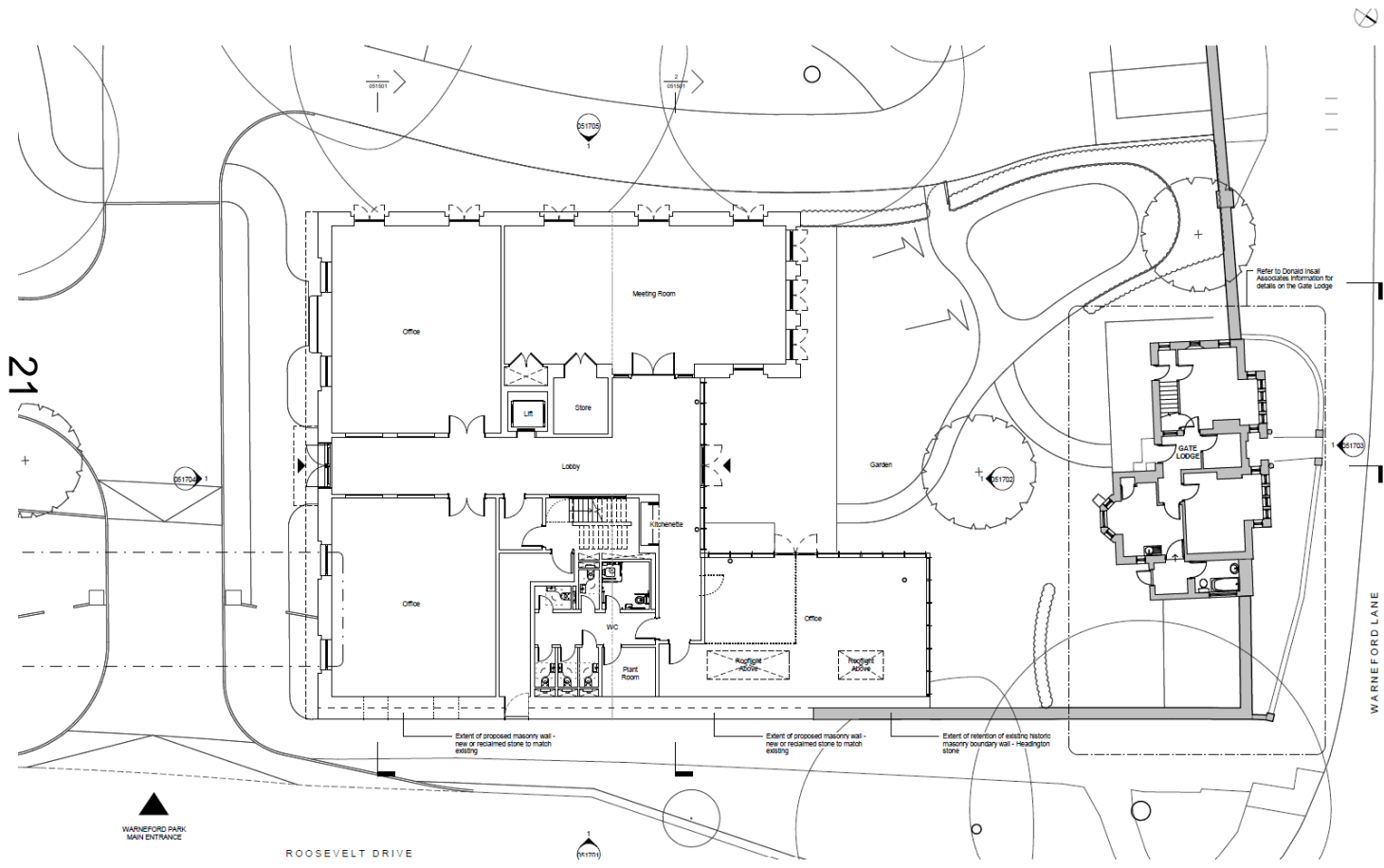
# Proposed POWIC/SANE building



**Ground Floor Plan**



# Proposed POWIC/SANE building



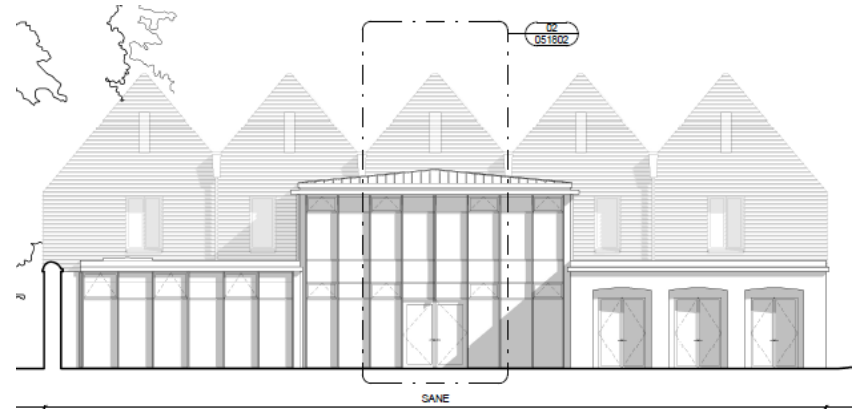
**Ground Floor Plan**



# Proposed POWIC/SANE building

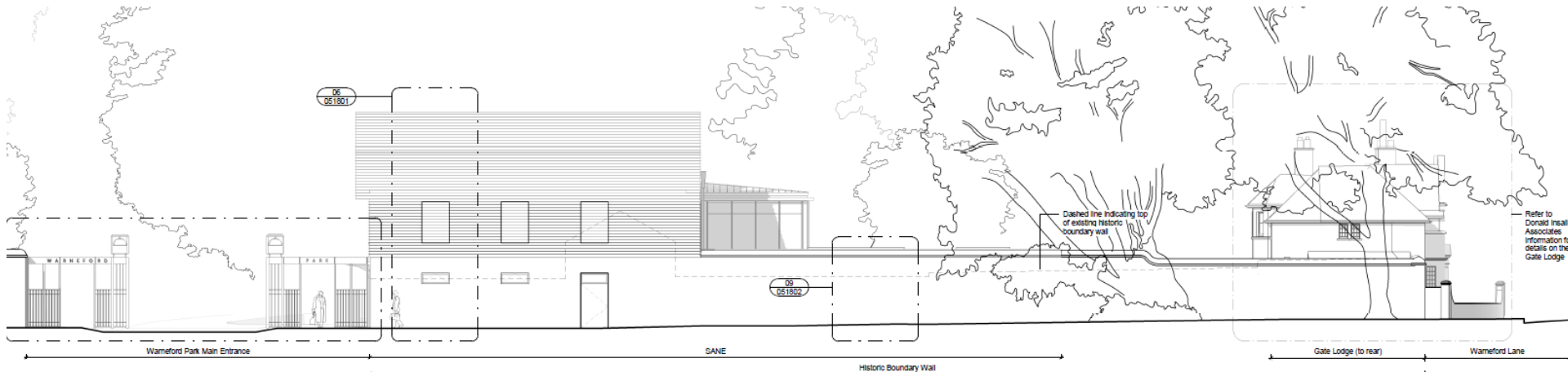


Front/South Elevation



Rear/North Elevation

22



Side/East Elevation

# Proposed POWIC/SANE building



# Proposed Basement Parking (phasing)

Step 1 (Application)	
Scanners	996 sqm
Parking Bays	208

Step 2	
Scanners	996 sqm
Labs	1162 sqm
Parking Bays	163

Step 3	
Scanners	996 sqm
Labs	1476 sqm
Parking Bays	150

Step 4	
Scanners	996 sqm
Labs	2146 sqm
Parking Bays	127



Diagram to show reduction of carparking in steps

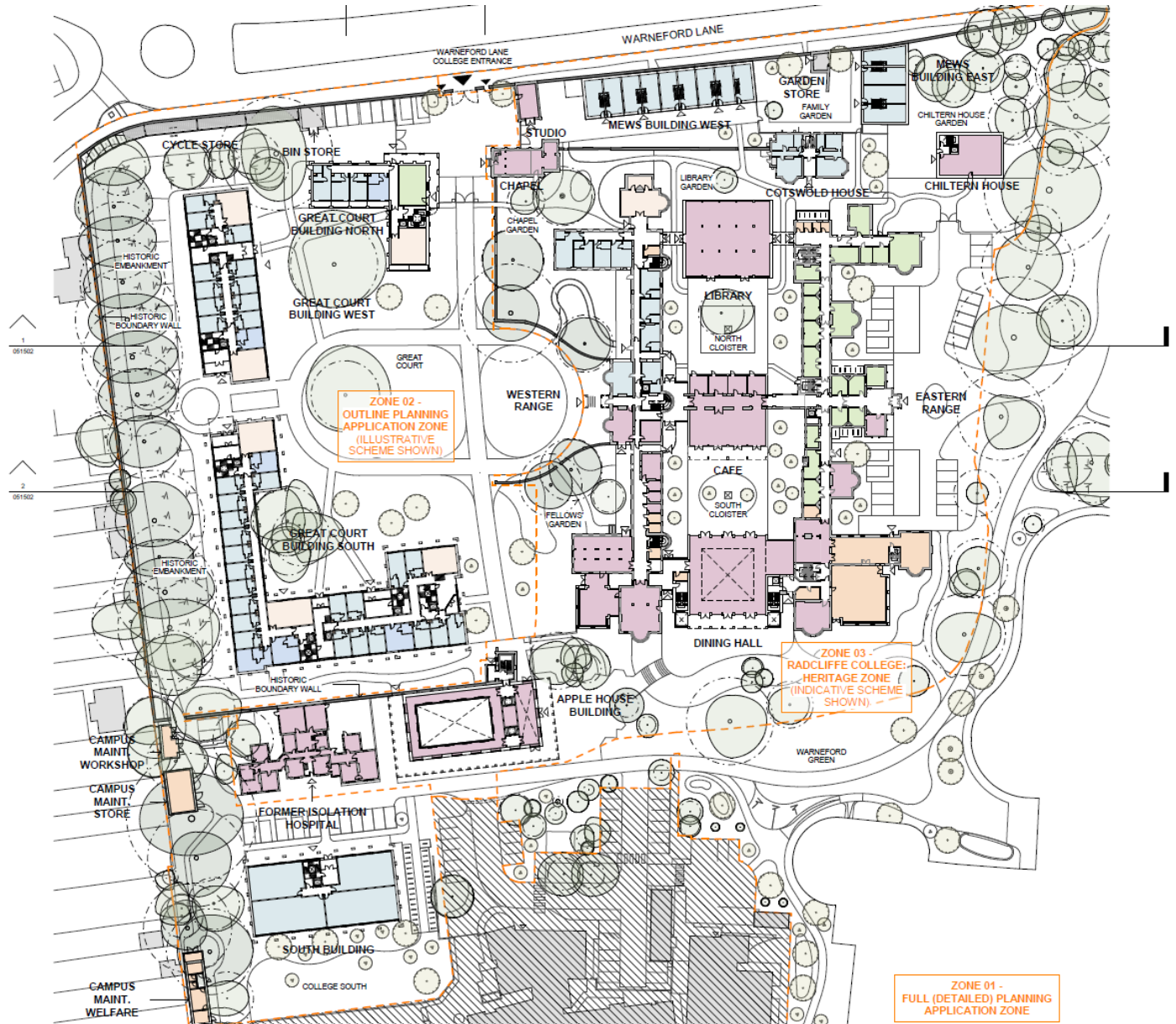
- Step 1
- Step 2
- Step 3
- Step 4
- Accessible space relocated in Step 2
- Space lost for ramp access in Step 4





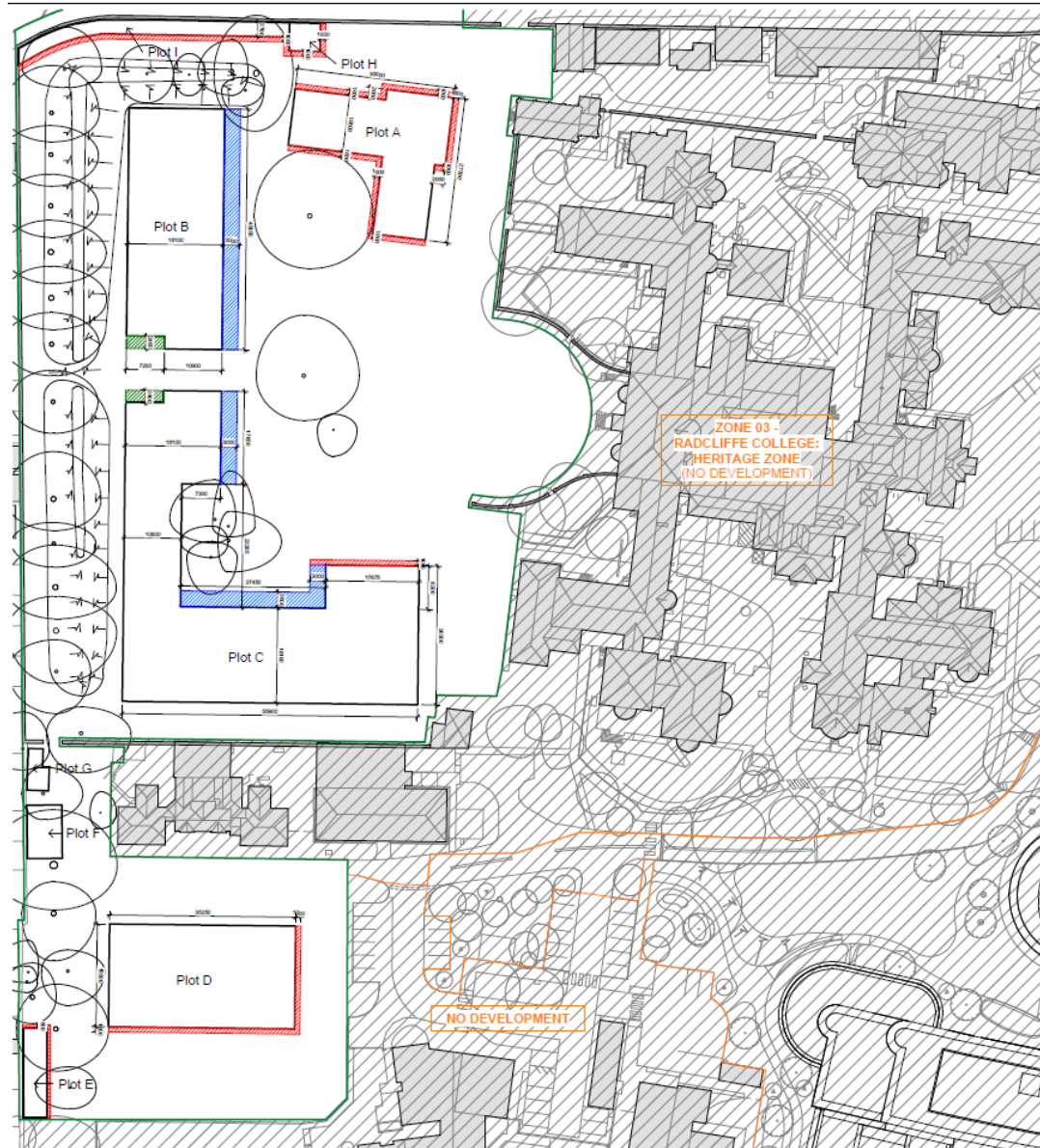
# The College – Illustrative Masterplan

26

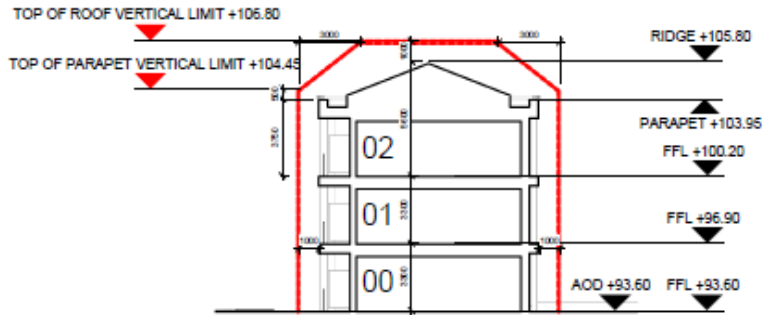


# The College – Deviation Limits

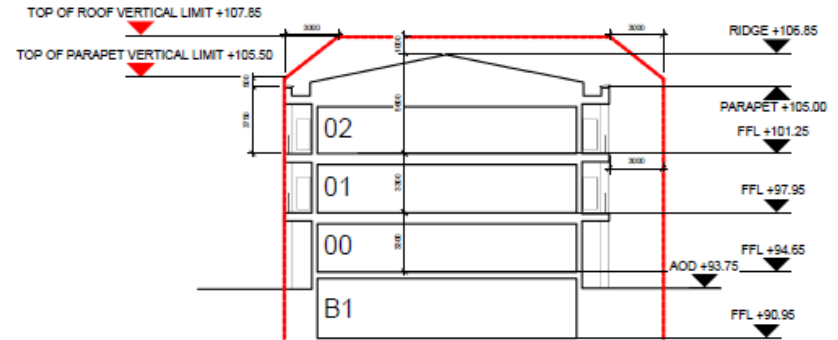
27



# The College – Height Limits

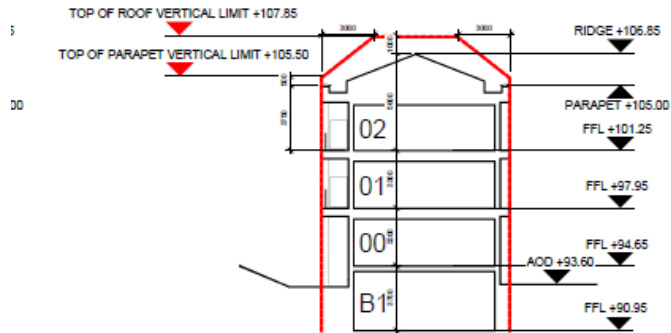


1 Plot A - Great Court Building North  
1 : 200

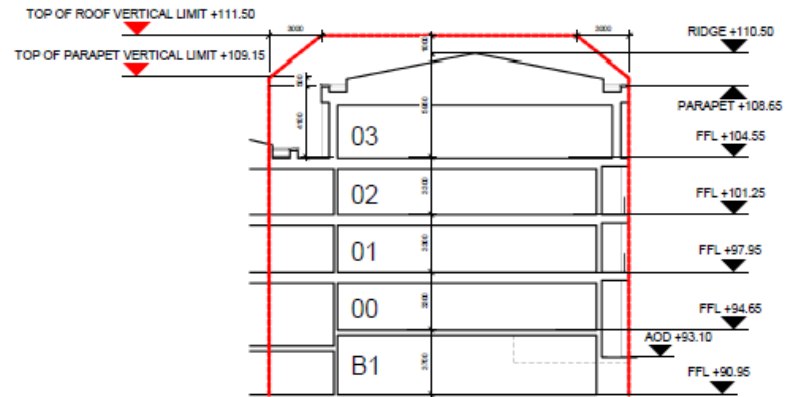


2 Plot B - Great Court Building West  
1 : 200

28

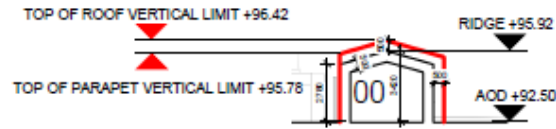


3 Plot C - Great Court Building South  
1 : 200

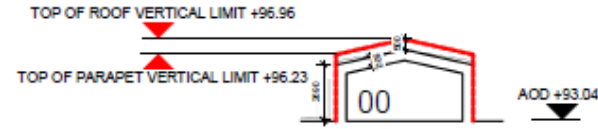


4 Plot C - Great Court Building South  
1 : 200

# The College – Height Limits

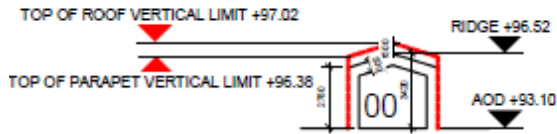


6 Plot E - College Maintenance Welfare 1 : 200

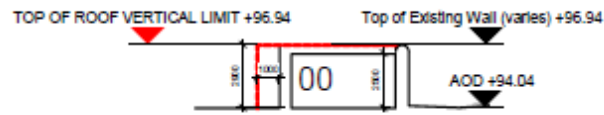


7 Plot F - College Maintenance Store 1 : 200

29



8 Plot G - College Maintenance Workshop 1 : 200



9 Plot H - College Bin Store 1 : 200



10 Plot I - College Cycle Store 1 : 200

# The College – Illustrative Views

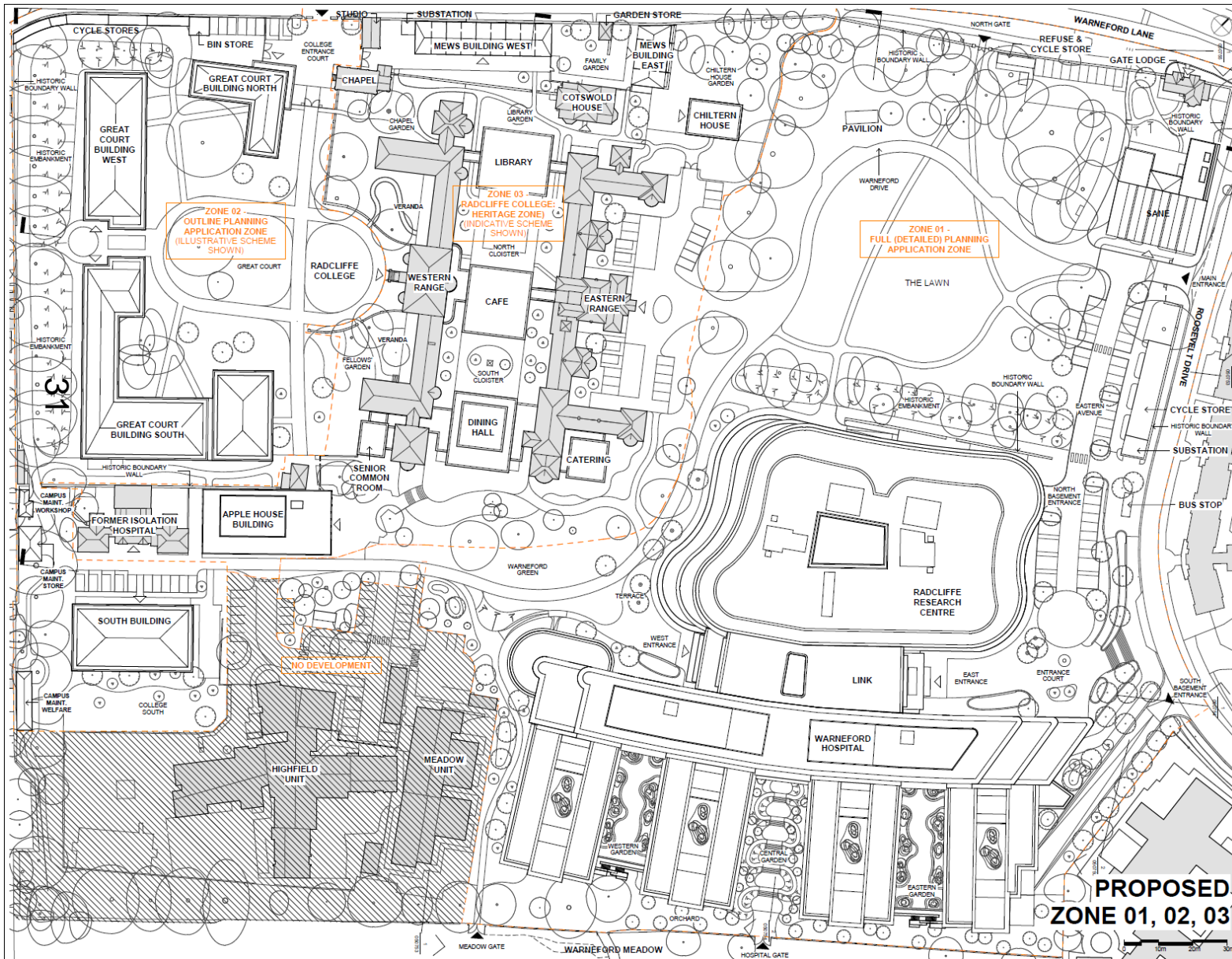


Indicative view looking across the Great Court towards the new Great Court West student accommodation building



View looking north west across Warneford Green

# Proposed Masterplan



**PROPOSED  
ZONE 01, 02, 03**



This page is intentionally left blank